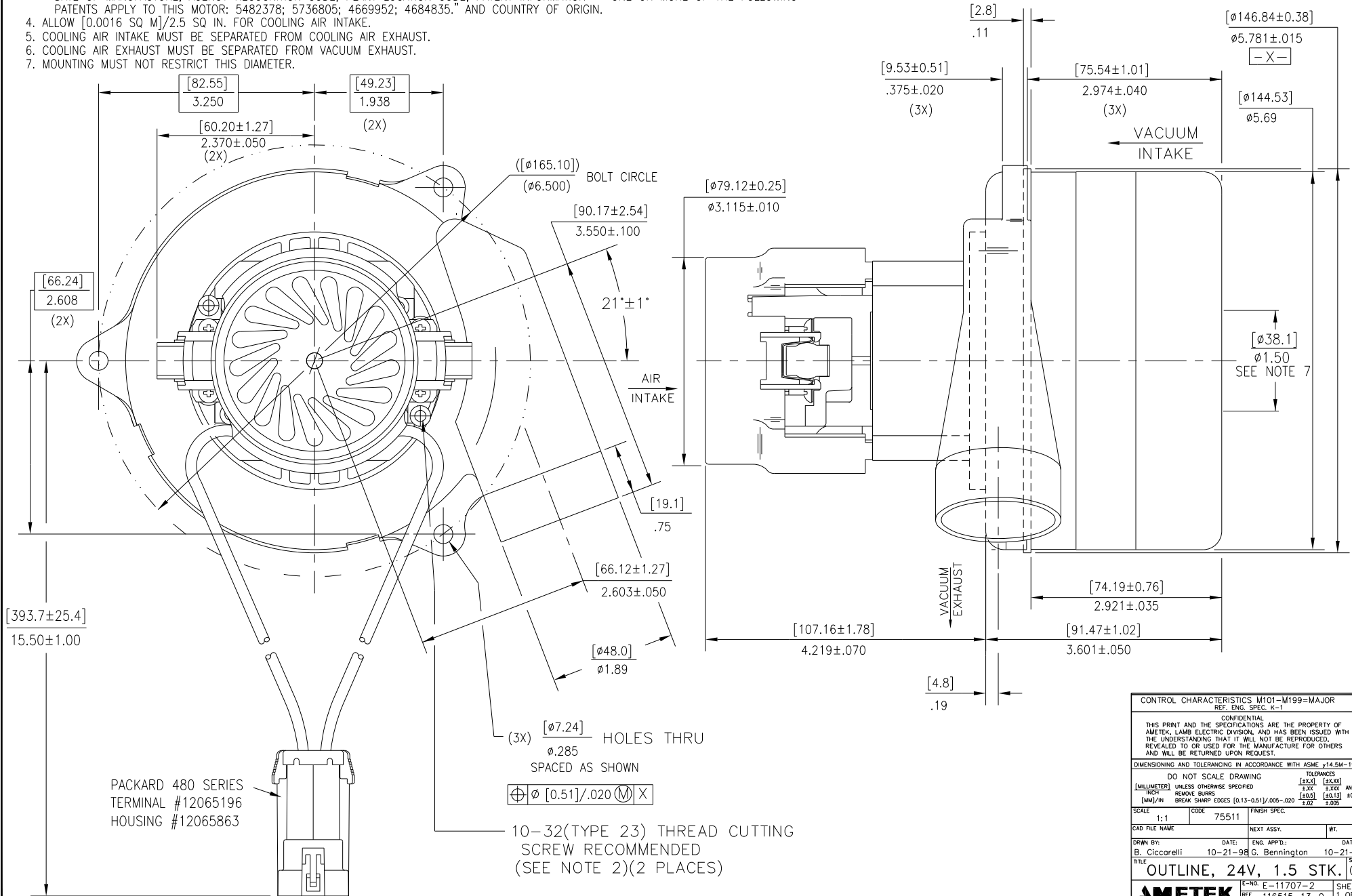


NOTES:

- LEADS: 14 GA STRANDED, LEADS CAN BE ANY COLOR EXCEPT GREEN OR GREEN WITH YELLOW STRIPE.
- GROUNDING OR EARTHING PROVISIONS: USE HOLES AS INDICATED FOR GROUNDING OR EARTHING. REFER TO APPROPRIATE LISTING OR REGULATORY AGENCY FOR PROPER METHOD OF GROUNDING OR EARTHING.
- MOTOR IDENTIFICATION: MANUFACTURER'S NAME, MODEL NUMBER, VOLTAGE, FREQUENCY, INSPECTOR'S CODE, DATE OF MANUFACTURE, AGENCY RECOGNITION CODE, PLANT LOCATION CODE, PATENT INFORMATION " ONE OR MORE OF THE FOLLOWING PATENTS APPLY TO THIS MOTOR: 5482378; 5736805; 4669952; 4684835." AND COUNTRY OF ORIGIN.
- ALLOW [0.0016 SQ M]/2.5 SQ IN. FOR COOLING AIR INTAKE.
- COOLING AIR INTAKE MUST BE SEPARATED FROM COOLING AIR EXHAUST.
- COOLING AIR EXHAUST MUST BE SEPARATED FROM VACUUM EXHAUST.
- MOUNTING MUST NOT RESTRICT THIS DIAMETER.

REVISIONS			
REV.	E/CN NO.	CHANGE	DATE
A	27306	TERMINAL #12065196 WAS: 12065197	3-19-99
B	32509	NOTE 3 (MOTOR I.D.) ADD PATENT INFORMATION	2-3-05



CONTROL CHARACTERISTICS M101-M199=MAJOR			
REF. ENG. SPEC. K-1			
CONFIDENTIAL			
THIS PRINT AND THE SPECIFICATIONS ARE THE PROPERTY OF AMETEK, LAMB ELECTRIC DIVISION, AND HAS BEEN ISSUED WITH THE UNDERSTANDING THAT IT WILL NOT BE REPRODUCED, REVEALED TO OR USED FOR THE MANUFACTURE FOR OTHERS AND WILL BE RETURNED UPON REQUEST.			
DIMENSIONING AND TOLERANCING IN ACCORDANCE WITH ASME Y14.5M-1994			
DO NOT SCALE DRAWING			
(MILLIMETER)	UNLESS OTHERWISE SPECIFIED	(±.05)	(±.03)
(INCH)	REMOVE BURRS	±.001	±.0005
(MM)/IN	BREAK SHARP EDGES [0.13-0.51]/.005-.020	(±0.5)	(±0.13)
SCALE	CODE	FINISH SPEC.	
1:1	75511		
CAD FILE NAME	NEXT ASSY.	WI.	
DRWN BY:	DATE:	ENG. APP'D:	DATE:
B. Ciccorelli	10-21-98	G. Bennington	10-21-98
TITLE	SIZE		
OUTLINE, 24V, 1.5 STK. C			
AMETEK		E-NO: E-11707-2	SHEET 1 OF 1
LAMB ELECTRIC DIVISION		REF: 116515-13-0	
KENT, OHIO 44240		DWG. NO.	
		116515-07-0	

D1
R3
K3
CZ

